

SS12C & SS12CXii

A 20mm miniature photocell range, featuring our unique "CONNECT" plug & socket, the SS12C offers time saving for both the OEM lantern manufacturer and the maintenance provider. The SS12C is available as a premium, extended warranty version (SS12CXii).



Overview:

- Highly effective dusk to dawn miniature photocell
- High accuracy and consistency when switching
- Includes a special lens arrangement to maximise acceptance angle



Features:

- Pioneering push and click technology creates a faster, improved installation. Maintenance and upgrade processes are simplified and more efficient due to new connector
- Includes an Electro Magnetic Relay predictive load transfer to minimise switching stresses

Specification

Sensor			
BG Glass Filtered Photodiode			
Drift Negligible			
Switching Technology			
Electronic EM Relay Load Switching			
Switching Regime in Lux and Time			
Light level		Availability in SS12C range	Typical switch regime burning hours per year
On at dusk	Off at dawn		
70 lux	35 lux	Yes	4142 hours per year
55 lux	28 lux	Yes	4122 hours per year
35 lux	18 lux	Yes	4095 hours per year
20 lux	20 lux	Yes	4083 hours per year
10 lux	10 lux	Contact Customer Service	4064 hours per year
Switching Ratio		1:1 20 Lux or 1:0.5	
Switching Delay		10 – 30 seconds	

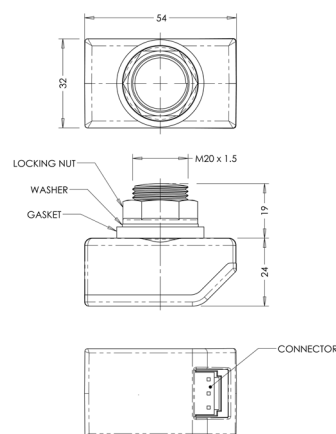
SS12C & SS12CXii

A 20mm miniature photocell range, featuring our unique “CONNECT” plug & socket, the SS12C offers time saving for both the OEM lantern manufacturer and the maintenance provider.

The SS12C is also available as a premium, extended warranty version (SS12CXii) to align with the warranty of typical LED lanterns.

SS12C	SS12C	SS12CXii
Maximum load for LED lighting	250 Watts	250 Watts
SS12C is compatible with other light sources. Maximum load for: High Pressure Sodium Metal Halide GLS or incandescent	500 Watts 500 Watts 1200 Watts	500 Watts 500 Watts 1200 Watts
Supply and Consumption		
Voltage	198-264	
Surge Suppression	20 Joules	
Frequency	47-63Hz	
Consumption in Watts	<0.25	
UMSUG Charge Code	94 0001 1000 100	
Operating Temperature		
Min/Max operating ambient temp range	-20/+80°C	-20/+80°C
Compliance and Approvals		
IP Rating	IP66 when installed	
Warranty	6 years	12 years
Compliance Standards	BS5972, BS EN IEC 55015, BS EN 55032, BS EN 60529, BS EN IEC 61000-3-2, BS EN 61000-3-3, BS EN IEC 61000-4-2, BS EN IEC 61000-4-3, BS EN 61000-4-4, BS EN 61000-4-5, BS EN 61000-4-6, BS EN IEC 61000-4-11, BS EN 61347-2-11, BSEN61547	

Dimensions and Construction:	
Height over turret	43mm
Length	54mm
Width	32mm
Weight	58G
Fixing	20mm Hole Diameter
Lead length	500mm
Control circuitry	Analogue
Body Material	Polycarbonate Enclosure (UV stabilised)



Order Codes

Order Code	Description	Warranty	Lux On	Lux Off
F6065C	SS12C 70 lux 1:0.5	6 years	70	35
F6066C	SS12C 55 lux 1:0.5	6 years	55	28
F6067C	SS12C 35 lux 1:0.5	6 years	35	18
F6068C	SS12C 20 lux 1:1	6 years	20	20
F6164C	SS12Xii 70 lux 1:0.5	12 years	70	35
F6163C	SS12Xii 55 lux 1:0.5	12 years	55	28
F6162C	SS12Xii 35 lux 1:0.5	12 years	35	18
F6161C	SS12Xii 20 lux 1:1	12 years	20	20



www.lucyzodion.com

Zodion House, Station Road, Sowerby Bridge HX6 3AF UK

