



Switched on Street lighting
FACT SHEET

Over 50 years' experience
in the design and
manufacture of smart
street lighting solutions

Our Vision

To have our products on every street around the world

Lucy Zodion is a leader in the design and manufacture of streetlighting equipment in the UK, supplying to countries throughout Europe, Australasia, Africa, the Far and Middle East. With a product range spanning across on-street lighting installation, from electrical distribution to control, our industry prominence has been afforded through years of experience and a dedication to innovation in the products and services we offer.



Our products are sold all over the world, including:

- Europe
- USA
- Brazil
- India
- China
- Australia

Awards

- **Highway Electrical Association (HEA) Award** Manufacturer of the Year 2016
- **Lux Lighting Awards** — Controls Product of the Year 2016 (Shortlist)

Key Company facts:

- **Founded** - 1957
- **Product portfolio** – Vizion® CMS, Photocells and Controls, Isolators & Cut-outs, Feeder Pillars and In ground feeder pillars
- **Location** - Sowerby Bridge, UK.
- **Products sold** in over 40 countries across the world
- **Brands under Lucy Zodion** – Citi Horizons, Lumo Lighting



Design and Innovation

Design Process - Our CAD driven design procedure guarantees a well-engineered product from the outset. The dedicated design team will work with a client not only from the start, but through all the processes to the finished product. Lucy Zodion have designed and produced some very exciting innovative products over the last few years, and we offer our customers the latest cutting edge technology with highly skilled designers and engineers.

Production - All of the pre-wired products are built in the custom build area within the Milton Keynes factory by qualified panel builders. We are introducing sustainable energy solutions for many of our manufacturing processes to ensure we uphold our responsibility to the environment. We only use named brand parts in our prewired solutions to ensure our customers receive a product that will last the test of time.

Testing - After manufacture our products are thoroughly tested within the purpose built L.V test area to ensure they meet BS7671 and the requirements of BSEN 61439. Our test procedures and quality assurance inspections ensure our products perform correctly and safely. We make sure all of our products will remain durable and effective in the most challenging of environments.

Quality Assurance

The Lucy Zodion Limited Quality Policy provides the approach necessary to ensure the requirements of ISO 9001:2008, and any regulatory/statutory requirements, are achieved in full and are improved where possible to ensure that customer requirements are met completely by the business.

Lucy Zodion's Quality Policy is to ensure high levels of customer satisfaction by:

- The continued awareness of all members of the company (and other company stakeholders) of their own contribution to Quality, and their responsibility for it
- Equipping staff with the tools, equipment and competencies necessary to achieve their objectives
- The adoption of new standards, techniques, materials and technology as they become available and are required by the company and its customers
- The continued development of the company through analysis and interpretation of Quality records, in order to monitor performance, detect trends, initiate action to prevent recurrence of problems, and take steps to prevent possible problems occurring
- To facilitate and promote continuous improvement at all levels of the organisation through a clear understanding of business trends and customer needs

Environmental Policy

Lucy Zodion Limited is committed to the protection of the environment by maintaining its ISO 14001 registration and enhancing both environmental and business performance. We ensure expectations to regulatory compliance and other best practice are met, striving for continual improvement of our EMS whilst minimising the creation of wastes and pollution with the following core aims:

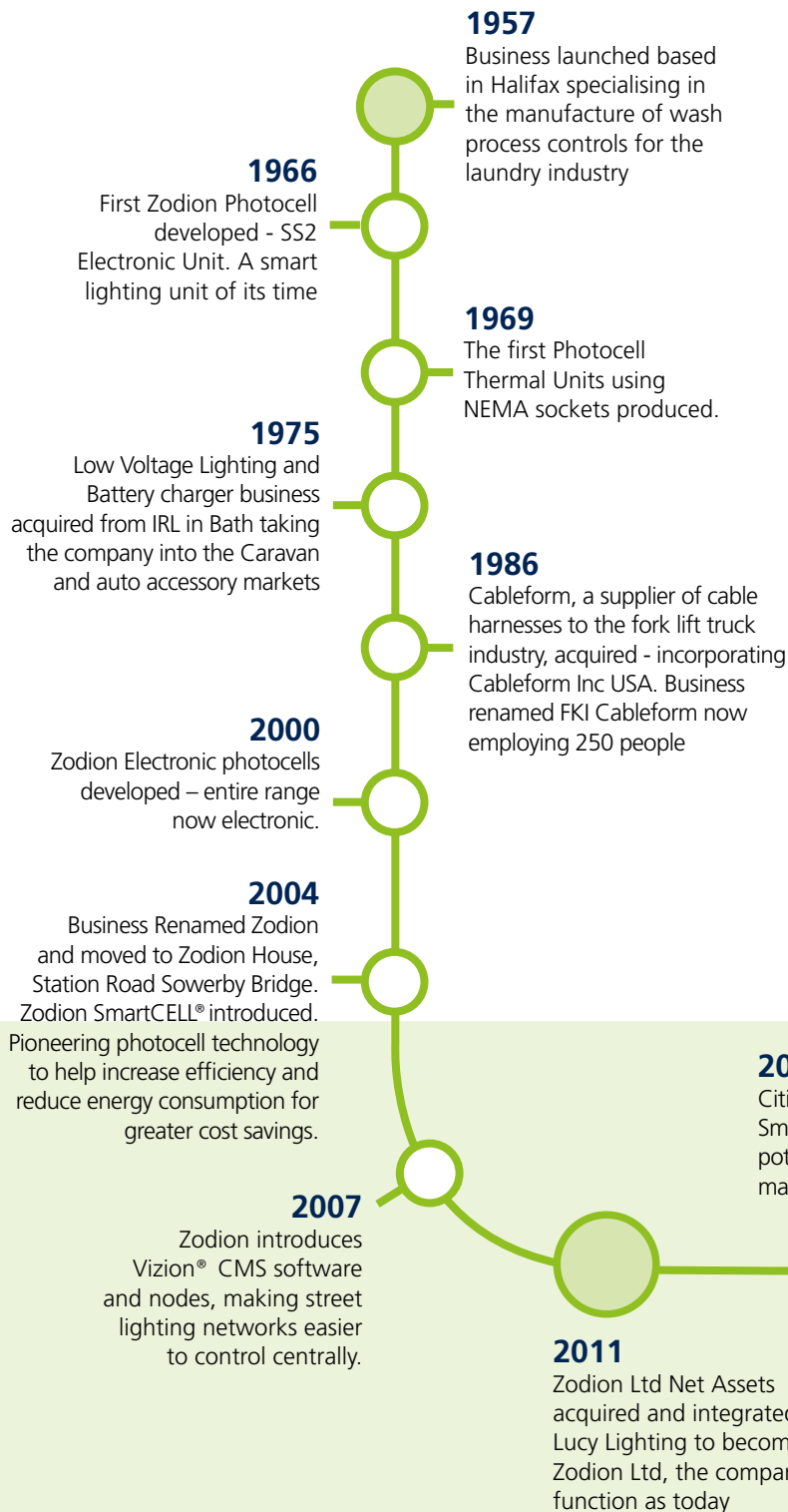
- Remove
- Reduce
- Reuse
- Recycle

The above approach covers:

- Energy and resource usage
- Materials (including packaging)
- Waste (including hazardous and general waste)
- Overall Environmental Impact

Within our business, products, suppliers, stakeholders and other interested parties.

Lucy Zodion timeline



Corporate responsibility

Our products are both cutting edge and very robust, offering energy savings of up to 40% and innovatively designed to be highly functional. We recognise that part of this vision is building and bringing to market environmentally friendly products, with a key component being efficiency with low consumption and exceptional control. As you would expect from the foremost manufacture of street lighting, our investment in the future is essential, not only for us but for our customers.



Contact Details

Station Road
Sowerby Bridge
West Yorkshire
HX6 3AF

T: +44 (0)1422 317 337

E: sales@lucyzodion.com

